

**NOTE:**

**ACTION 2-1-2** - Use special street section along with 3rd and 4th streets from the intersection with 7th Street to the intersection with 8th Street. See City of San Bernardino Department of Engineering Drawing 16-280-B.

**ACTION 2-2-2** - Use special street section along with 3rd and 4th streets from the intersection with 7th Street to the intersection with 8th Street. See City of San Bernardino Department of Engineering Drawing 16-280-B.

**ACTION 2-3-2** - Use special street section along with 3rd and 4th streets from the intersection with 7th Street to the intersection with 8th Street. See City of San Bernardino Department of Engineering Drawing 16-280-B.

**ACTION 2-4-2** - Use special street section along with 3rd and 4th streets from the intersection with 7th Street to the intersection with 8th Street. See City of San Bernardino Department of Engineering Drawing 16-280-B.

**ACTION 2-5-2** - Use special street section along with 3rd and 4th streets from the intersection with 7th Street to the intersection with 8th Street. See City of San Bernardino Department of Engineering Drawing 16-280-B.

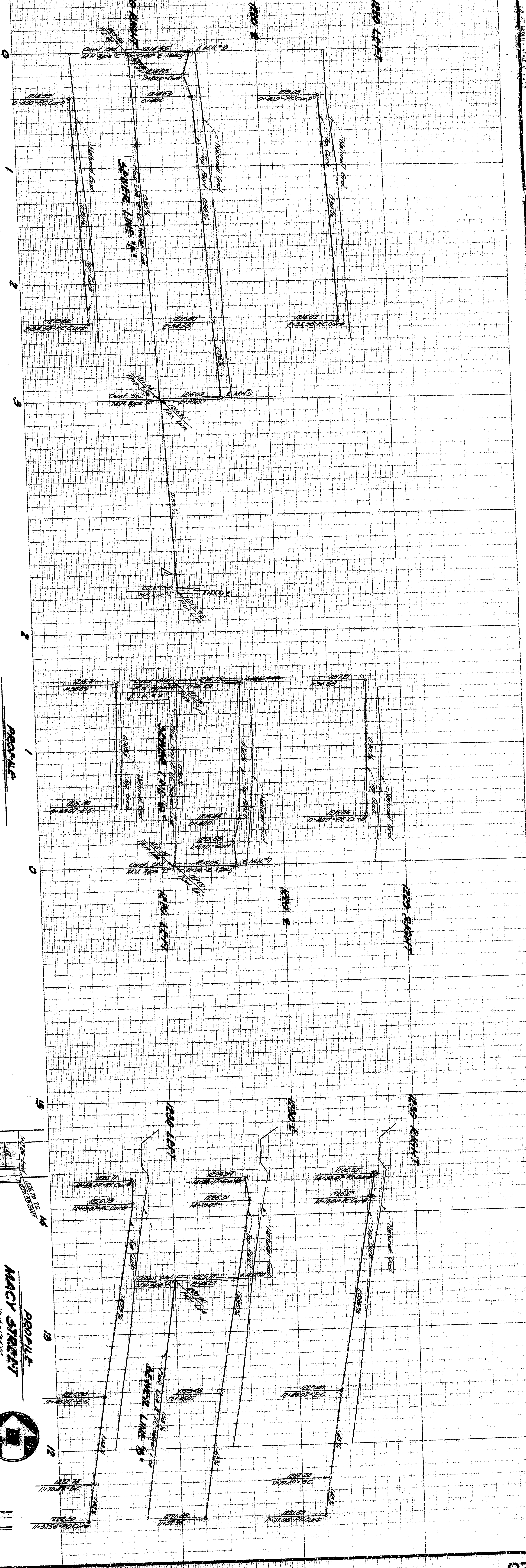
**ACTION 2-6-2** - Use special street section along with 3rd and 4th streets from the intersection with 7th Street to the intersection with 8th Street. See City of San Bernardino Department of Engineering Drawing 16-280-B.

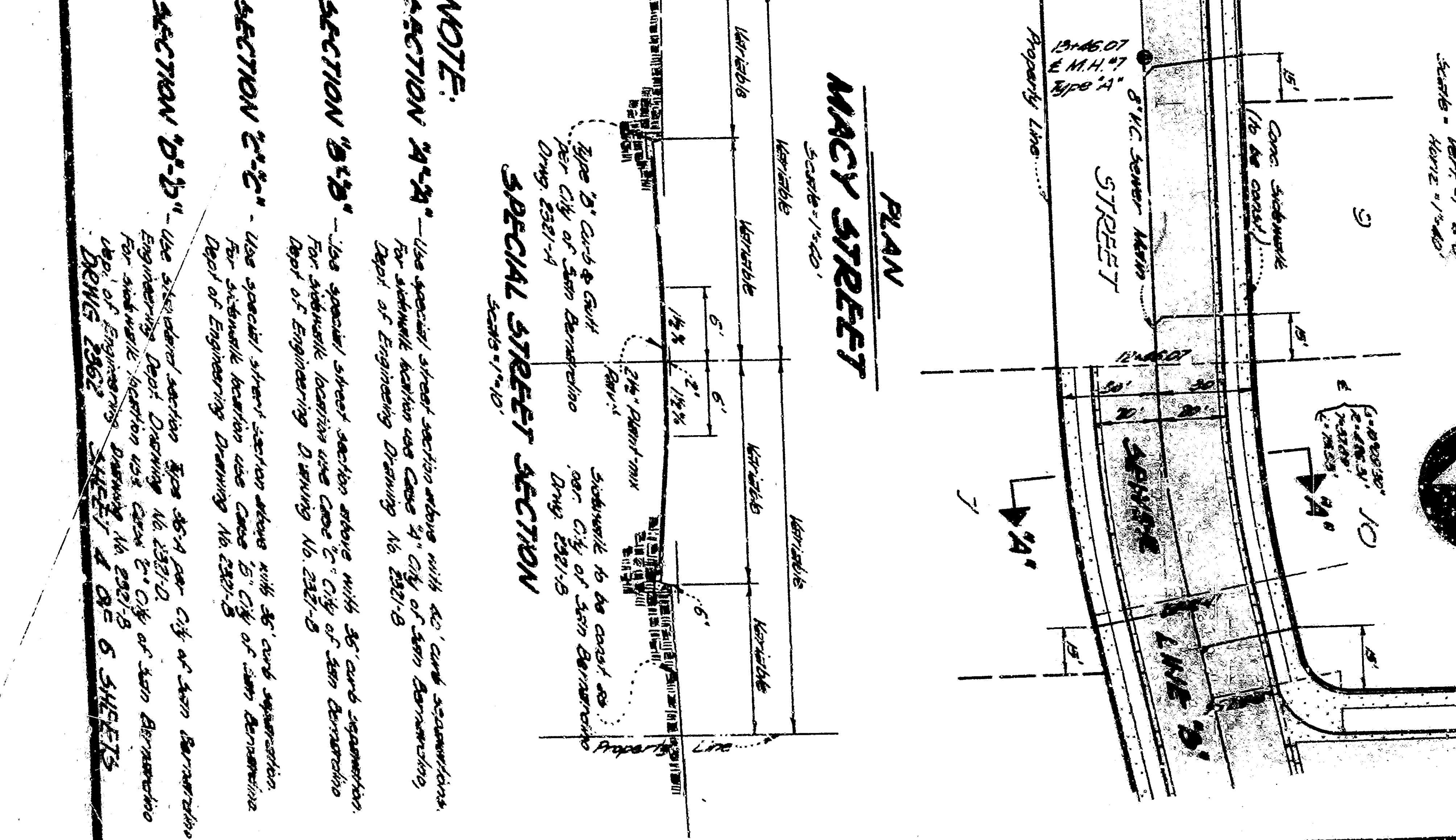
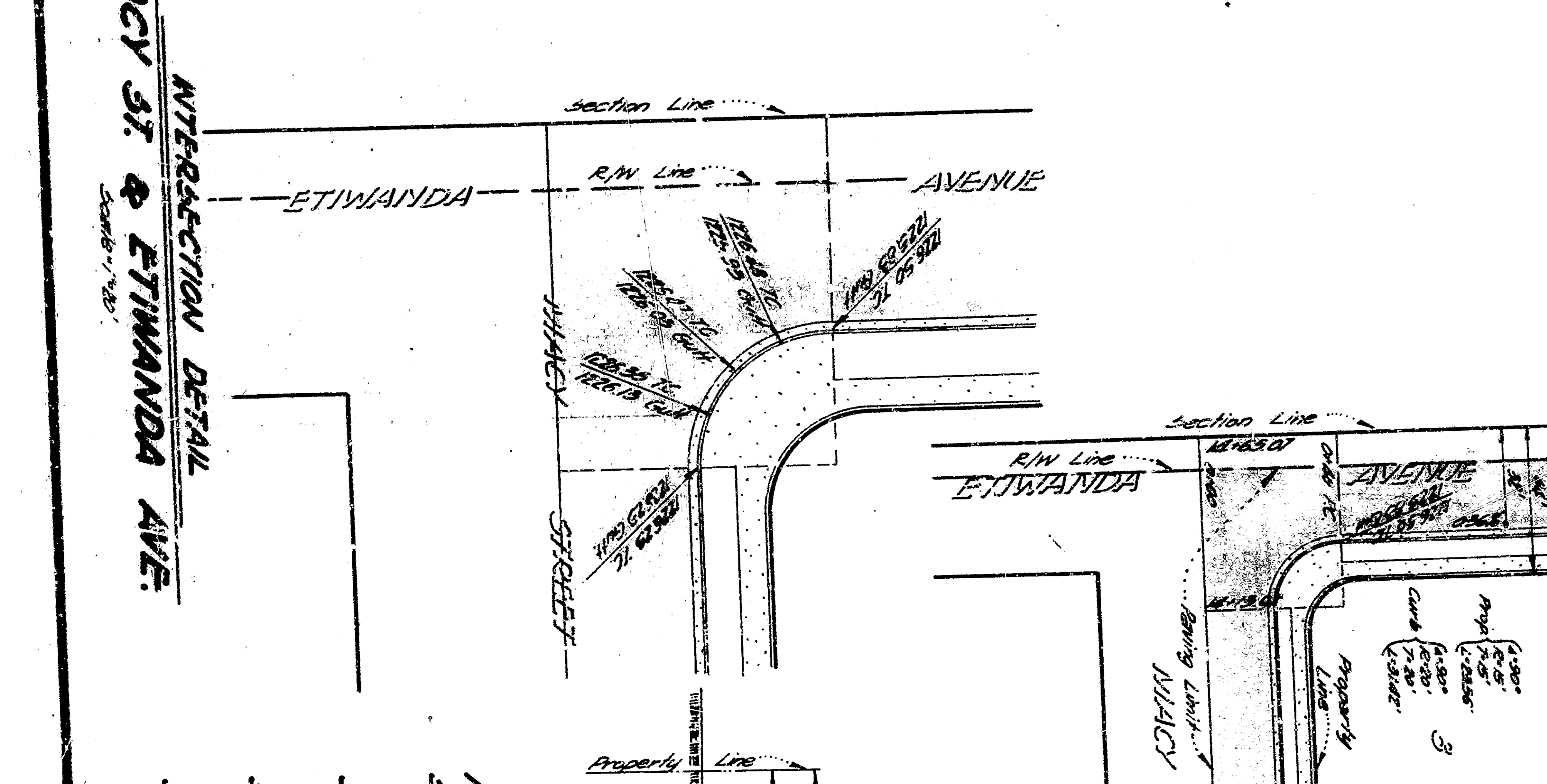
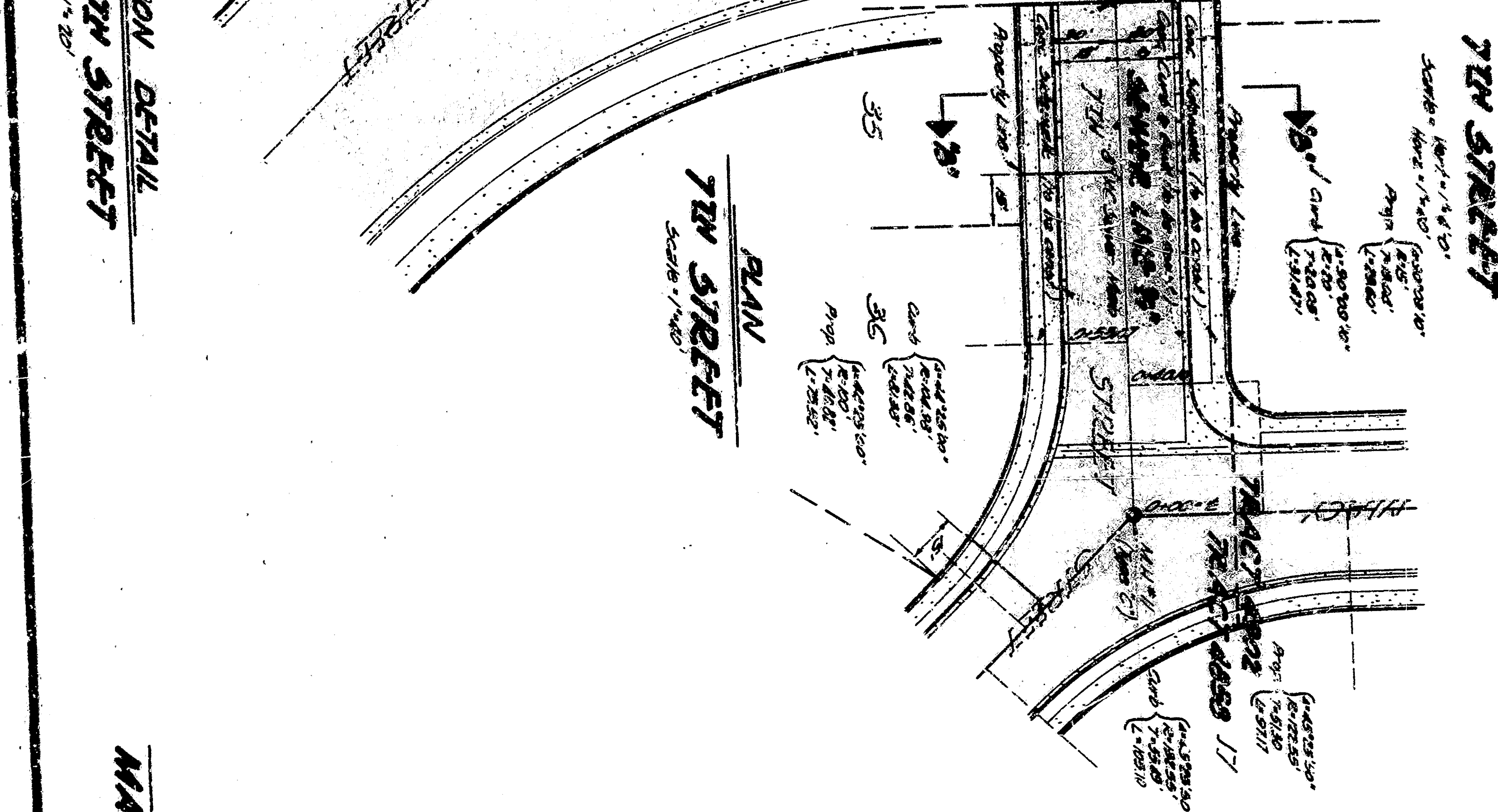
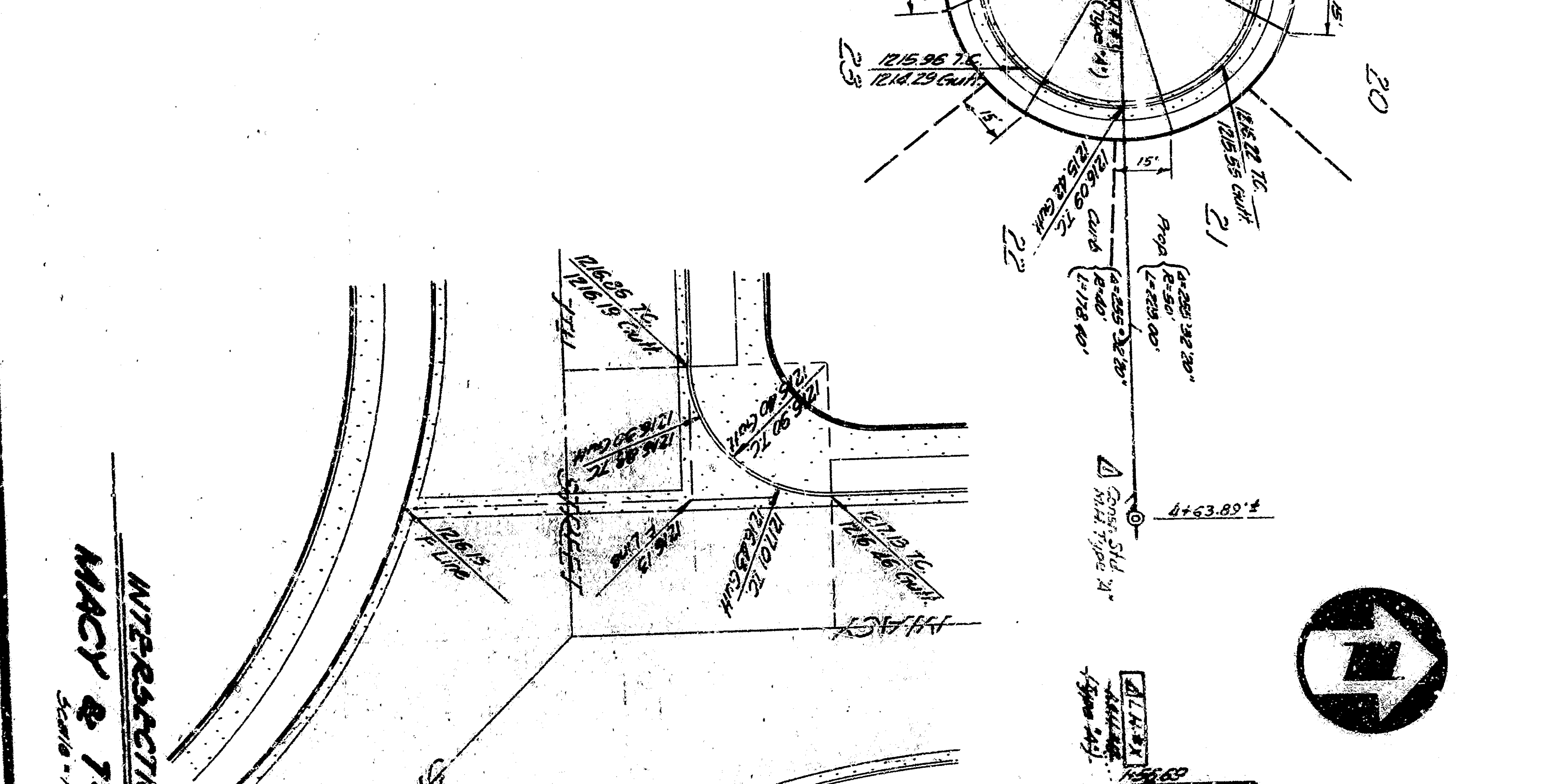
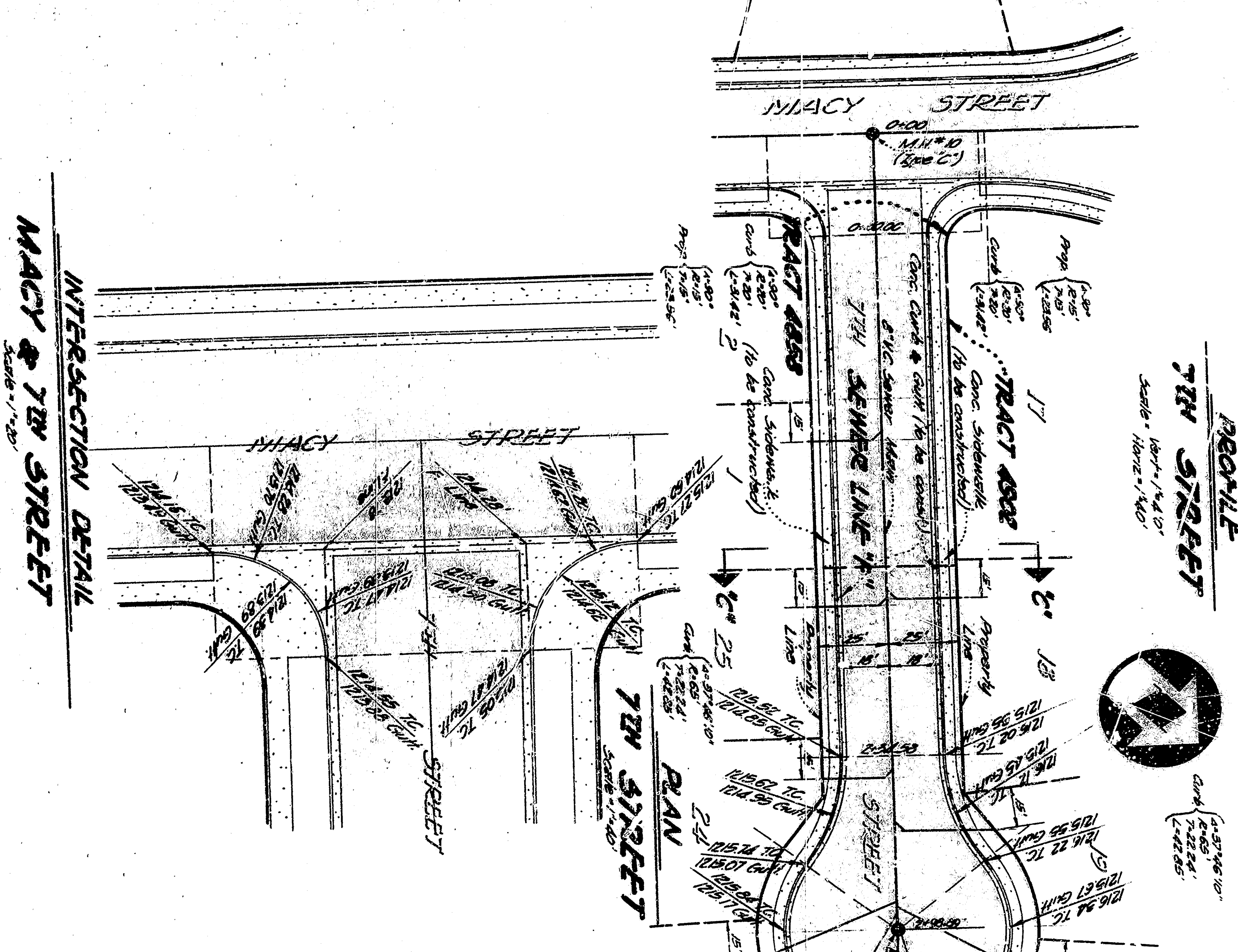
**ACTION 2-7-2** - Use special street section along with 3rd and 4th streets from the intersection with 7th Street to the intersection with 8th Street. See City of San Bernardino Department of Engineering Drawing 16-280-B.

**ACTION 2-8-2** - Use special street section along with 3rd and 4th streets from the intersection with 7th Street to the intersection with 8th Street. See City of San Bernardino Department of Engineering Drawing 16-280-B.

**ACTION 2-9-2** - Use special street section along with 3rd and 4th streets from the intersection with 7th Street to the intersection with 8th Street. See City of San Bernardino Department of Engineering Drawing 16-280-B.

**ACTION 2-10-2** - Use special street section along with 3rd and 4th streets from the intersection with 7th Street to the intersection with 8th Street. See City of San Bernardino Department of Engineering Drawing 16-280-B.





**NOTE:**  
**ACTION 2-1-2** - Use special street section along with 3rd and 4th streets.  
**ACTION 3-1-3** - Use special street section along with 5th and 6th streets.  
**ACTION 4-1-4** - Use special street section along with 7th and 8th streets.  
**ACTION 5-1-5** - Use special street section along with 9th and 10th streets.  
**ACTION 6-1-6** - Use special street section along with 11th and 12th streets.  
**ACTION 7-1-7** - Use special street section along with 13th and 14th streets.  
**ACTION 8-1-8** - Use special street section along with 15th and 16th streets.  
**ACTION 9-1-9** - Use special street section along with 17th and 18th streets.  
**ACTION 10-1-10** - Use special street section along with 19th and 20th streets.  
**ACTION 11-1-11** - Use special street section along with 21st and 22nd streets.  
**ACTION 12-1-12** - Use special street section along with 23rd and 24th streets.  
**ACTION 13-1-13** - Use special street section along with 25th and 26th streets.  
**ACTION 14-1-14** - Use special street section along with 27th and 28th streets.  
**ACTION 15-1-15** - Use special street section along with 29th and 30th streets.  
**ACTION 16-1-16** - Use special street section along with 31st and 32nd streets.  
**ACTION 17-1-17** - Use special street section along with 33rd and 34th streets.  
**ACTION 18-1-18** - Use special street section along with 35th and 36th streets.  
**ACTION 19-1-19** - Use special street section along with 37th and 38th streets.  
**ACTION 20-1-20** - Use special street section along with 39th and 40th streets.  
**ACTION 21-1-21** - Use special street section along with 41st and 42nd streets.  
**ACTION 22-1-22** - Use special street section along with 43rd and 44th streets.  
**ACTION 23-1-23** - Use special street section along with 45th and 46th streets.  
**ACTION 24-1-24** - Use special street section along with 47th and 48th streets.  
**ACTION 25-1-25** - Use special street section along with 49th and 50th streets.  
**ACTION 26-1-26** - Use special street section along with 51st and 52nd streets.  
**ACTION 27-1-27** - Use special street section along with 53rd and 54th streets.  
**ACTION 28-1-28** - Use special street section along with 55th and 56th streets.  
**ACTION 29-1-29** - Use special street section along with 57th and 58th streets.  
**ACTION 30-1-30** - Use special street section along with 59th and 60th streets.  
**ACTION 31-1-31** - Use special street section along with 61st and 62nd streets.  
**ACTION 32-1-32** - Use special street section along with 63rd and 64th streets.  
**ACTION 33-1-33** - Use special street section along with 65th and 66th streets.  
**ACTION 34-1-34** - Use special street section along with 67th and 68th streets.  
**ACTION 35-1-35** - Use special street section along with 69th and 70th streets.  
**ACTION 36-1-36** - Use special street section along with 71st and 72nd streets.  
**ACTION 37-1-37** - Use special street section along with 73rd and 74th streets.  
**ACTION 38-1-38** - Use special street section along with 75th and 76th streets.  
**ACTION 39-1-39** - Use special street section along with 77th and 78th streets.  
**ACTION 40-1-40** - Use special street section along with 79th and 80th streets.  
**ACTION 41-1-41** - Use special street section along with 81st and 82nd streets.  
**ACTION 42-1-42** - Use special street section along with 83rd and 84th streets.  
**ACTION 43-1-43** - Use special street section along with 85th and 86th streets.  
**ACTION 44-1-44** - Use special street section along with 87th and 88th streets.  
**ACTION 45-1-45** - Use special street section along with 89th and 90th streets.  
**ACTION 46-1-46** - Use special street section along with 91st and 92nd streets.  
**ACTION 47-1-47** - Use special street section along with 93rd and 94th streets.  
**ACTION 48-1-48** - Use special street section along with 95th and 96th streets.  
**ACTION 49-1-49** - Use special street section along with 97th and 98th streets.  
**ACTION 50-1-50** - Use special street section along with 99th and 100th streets.

